



WOODTURNING TOOLS



ENTSCHEIDUNG FÜR QUALITÄT



Tools
from professionals
for professionals.

ENTSCHEIDUNG FÜR QUALITÄT

© STUBAI ZMV GmbH

Article	Page
A	
Alder-wood handles	34
B	
Bowl gouge, deep fluted	5
Bowl gouge, deep fluted, without handle	29
C	
Captive ring tool	8
Captive ring tool without handle, comb.	31
Chisel, skew	6
Chisel without handle, skew	29
Cylinder screw for DWS articles	18
D	
Double joint piece	16
DWS Basic Set with 3 cutting plates, without joint	12
DWS Turning system with 3 cutting plates, with handle	13
F	
Felt buffing wheel	35
H	
Hexagon keys	17
Holder bar with handle	15
Holder bar with joint receiver without handle	15
Holder bar without handle	15
Holder rod set with joint with handle	14
Holder rod set with joint without handle	14
HSS Ballcutter with handle	9
HSS cutting head	36
HSS-Cuttinghead	36
HSS parting tool, square	10
HSS Parting tool	9
HSS Parting tool	9
HSS Parting tool, diamond section	10
HSS Parting Tool Knife-Shaped	10
HSS Spindle gouge	5
HSS swivel hook	8
I	
Inside caliper	37
J	
Joiner's square, aluminium	37
Joint adapter mount	16
Joint plate head	17
M	
Micro chisel, skew	27
Micro hollowing scraper, square, 80°	28
Micro scraper, pointed	28
Micro scraper, round nose	27
Micro spindle gouge	27
Micro spindle gouge	27
Mould plate, pear shape	36
Mould plate, round	36
Mould plate, square	36
Multi-Tip scraper	8
O	
Outside caliper	37
Oval-chisel, skew	7
Oval-Chisel without handle	30
P	
Parting tool without handle, diamond section	32

Article	Page
Parting tool without handle, square	32
Parting tool without handle, tapered, milled groove	32
Parting tool without handle, tapered profile	31
Pencil dividers with bow	37
Plate head	16
R	
Ringcutter, head changeable	9
Ring knife, HSS cutting head exchangeable without handle	31
Roller bag for woodturning tools	34
Roll-up bag for woodturning tools 8-pcs.	18, 34
Roughing-out gouge, heavy duty	5
Roughing-out gouge, without handle, heavy duty	29
Round turning tool	7, 30
S	
Scraper, pointed	7
Scraper, round nose	6
Scraper, round/side cut	7
Scraper, square end	6
Scraper, square/side cut	8
Scraper without handle, pointed	30
Scraper without handle, round nose	29
Scraper without handle, round/side cut	31
Scraper without handle, square end	30
Scraper without handle, square/side cut	31
Shape plate, angular	17
Shape plate, pear shape	17
Shape plate, round	17
Sharpening paste	35
Sharpening stone for woodturning tools	34
Sliding bevel	37
Spare sharpening wheel	35, 36
Spindle form tube "English form"	5
Spindle form tube "English form" without handle	28
Spindle gouge without handle	28
T	
Torx keys	17
Torx screw for DWS articles	18
Turning interchangeable plate system (DWS) without handle	14
Turning iron basic set 7 pcs. in roll bag	22
Turning iron set 4 pcs. in roll bag	23
Turning iron set 7 pcs. in roll bag	22
Turning iron set no. 1 4 pcs. in roll-up bag	24
Turning iron set no. 2 4 pcs. in roll-up bag	24
Turning iron set no. 3 5 pcs. in roll-up bag	25
Turning iron set no. 4 6 pcs. in roll-up bag	25
W	
Woodturning set, 3 pcs. "startup set"	21
Woodturning set, 4 pcs. "basic equipment"	21
Woodturning tool set, 4 pcs.	20
Woodturning tool set 4 pcs. for crossbar in roll bag	23
Woodturning tool set, 5 pcs.	20

Article	Page
---------	------

The basic material of our HSS woodturning tools is high-alloy WOLFRAM-MOLYBDEN-STEEL, manufactured by experienced master blacksmiths. High-performance high-speed steel has decisive advantages over conventionally hardened tool steel:

- **Tempering resistance:** burning is almost impossible during grinding
- **High hardness value:** good edge retention even with hard woods and high turning speed
- **High wear resistance:** The service life of the cutting edge compared to conventional tool steel is at least 6 times higher.

HSS WOOD TURNING TOOLS WITH ALDER-WOOD HANDLE

- working range hardness HRC 63
- optimum cutting edge retention
- blade fine polished, made of HSS steel
- steel clamp
- **STUBAI** guarantees the highest quality
- handle made of alder wood, ergonomically shaped, unvarnished
- end cap



BASIC HEALTH AND SAFETY INSTRUCTIONS

- Special care is required for eyes and lungs. Always use protective glasses and dust masks!
- Keep loose clothing and hair away from the lathe!
- Do not start the lathe if you are under the influence of alcohol or drugs!
- When you switch on the lathe, always start at a low turning speed!
- Always use the appropriate tool for the particular job!
- Make sure that the wood is well fixed before you start the lathe!
- Never try to move the wood while it is turning!
- Always keep your workplace clean!
- Do not leave any shavings on the floor, as these are not only slippery but can also burn easily!
- Never smoke in the workplace!

Alder handle chisel

No. 7005 HSS Spindle gouge



Art. No.	Weight	Length	Width	Handle length		EAN No. 9802793
7005 07	230 g	480 mm	7 mm	300 mm	1 Piece	848020
7005 10	280 g	480 mm	10 mm	300 mm	1 Piece	848037
7005 13	310 g	480 mm	13 mm	300 mm	1 Piece	848044
7005 18	380 g	480 mm	18 mm	300 mm	1 Piece	848051
7005 22	415 g	480 mm	22 mm	300 mm	1 Piece	848105
7005 27	460 g	480 mm	27 mm	300 mm	1 Piece	848112
7005 32	500 g	480 mm	32 mm	300 mm	1 Piece	848129

Spare parts

Art. No.	suitable for	Description		EAN No. 9802793
7099 30	7005 07, 7005 10, 7005 13, 7005 18, 7005 22, 7005 27, 7005 32	Alder-wood handles 300 mm	1 Piece	849348

Almost all curved shapes can be turned and made to a good smooth finish with this tool.

Wood type: alder

NOVELTY!

No. 7006 Spindle form tube "English form"



Art. No.	Weight	Length	Width	Handle length		EAN No. 9802793
7006 08	245 g	480 mm	8 mm	300 mm	1 Piece	953168
7006 10	300 g	480 mm	10 mm	300 mm	1 Piece	953175
7006 13	400 g	480 mm	13 mm	300 mm	1 Piece	953182

Milled from HSS round steel, very high stability despite the small diameter, does not start swinging easily, lies in the hand more calmly, ideal for shaping, fine profiling in lengthwise and crosswise wood, for small detailed work, for deep grooves in long wood.

Wood type: alder

No. 7008 Roughing-out gouge, heavy duty



Art. No.	Weight	Length	Width	Handle length		EAN No. 9802793
7008 19	410 g	480 mm	19 mm	300 mm	1 Piece	848167
7008 32	510 g	480 mm	32 mm	300 mm	1 Piece	848174

Spare parts

Art. No.	suitable for	Description		EAN No. 9802793
7099 30	7008 19, 7008 32	Alder-wood handles 300 mm	1 Piece	849348

For the first work step on the lathe. The gouge can usually be used to turn away wide chips and roughly pre-turn the basic shape.

Wood type: alder

No. 7010 Bowl gouge, deep fluted



Art. No.	Weight	Length	Width	Handle length		EAN No. 9802793
7010 08	395 g	650 mm	8 mm	400 mm	1 Piece	848204
7010 10	400 g	650 mm	10 mm	400 mm	1 Piece	848211
7010 13	480 g	650 mm	13 mm	400 mm	1 Piece	848228
7010 16	630 g	650 mm	16 mm	400 mm	1 Piece	848235
7010 16L	740 g	700 mm	16 mm	400 mm	1 Piece	883526
7010 20	950 g	730 mm	20 mm	400 mm	1 Piece	848242

Spare parts

Art. No.	suitable for	Description		EAN No. 9802793
7099 40	7010 08, 7010 10, 7010 13, 7010 16, 7010 16L, 7010 20	Alder-wood handles 400 mm	1 Piece	849355

The performance of the tool is particularly important when working against the grain. Our special HSS bowl gouge is far more suitable for this kind of work than conventional gouges. The special shape of this tool allows shavings to be removed quickly and efficiently and prevents the tool from being caught in the wood during turning.

Wood type: alder

No. 7020 Chisel, skew



Art. No.	Weight	Length	Width	Handle length		EAN No. 9002793
7020 12	270 g	490 mm	12 mm	300 mm	1 Piece	848303
7020 15	320 g	490 mm	15 mm	300 mm	1 Piece	848310
7020 20	330 g	490 mm	20 mm	300 mm	1 Piece	848327
7020 25	400 g	490 mm	25 mm	300 mm	1 Piece	848334
7020 30	470 g	490 mm	30 mm	300 mm	1 Piece	848341
7020 35	495 g	490 mm	35 mm	300 mm	1 Piece	848358

Spare parts

Art. No.	suitable for	Description		EAN No. 9002793
7099 30	7020 12, 7020 15, 7020 20, 7020 25, 7020 30, 7020 35	Alder-wood handles 300 mm	1 Piece	849348

This skew chisel is indispensable for parting and for making V-cuts. Also for shaping along the grain.

Wood type: alder

No. 7022 Scraper, round nose



Art. No.	Weight	Length	Width	Handle length		EAN No. 9002793
7022 12	300 g	490 mm	12 mm	300 mm	1 Piece	848426
7022 15	320 g	490 mm	15 mm	300 mm	1 Piece	848433
7022 20	390 g	490 mm	20 mm	300 mm	1 Piece	848440
7022 25	400 g	490 mm	25 mm	300 mm	1 Piece	848457
7022 30	470 g	490 mm	30 mm	300 mm	1 Piece	848464
7022 35	480 g	490 mm	35 mm	300 mm	1 Piece	848471

Spare parts

Art. No.	suitable for	Description		EAN No. 9002793
7099 30	7022 12, 7022 15, 7022 20, 7022 25, 7022 30, 7022 35	Alder-wood handles 300 mm	1 Piece	849348

Used for working across the grain, e.g. bowls, plates etc. When the first stages of work have been completed with a spindle or bowl gouge these tools are used to give a smooth finish on all surfaces. These scrapers should be used with burr on edge. The iron is ROUND and only has the bevelled edge on one side.

Wood type: alder

No. 7024 Scraper, square end



Art. No.	Weight	Length	Width	Handle length		EAN No. 9002793
7024 12	300 g	490 mm	12 mm	300 mm	1 Piece	848549
7024 15	300 g	490 mm	15 mm	300 mm	1 Piece	848556
7024 20	370 g	490 mm	20 mm	300 mm	1 Piece	848563
7024 25	370 g	490 mm	25 mm	300 mm	1 Piece	848570
7024 30	370 g	490 mm	30 mm	300 mm	1 Piece	848587
7024 35	480 g	490 mm	35 mm	300 mm	1 Piece	848594

Spare parts

Art. No.	suitable for	Description		EAN No. 9002793
7099 30	7024 12, 7024 15, 7024 20, 7024 25, 7024 30, 7024 35	Alder-wood handles 300 mm	1 Piece	849348

Used for working across the grain, e.g. bowls, plates etc. When the first stages of work have been completed with a spindle or bowl gouge these tools are used to give a smooth finish on all surfaces. These scrapers should be used with burr on edge. The iron is STRAIGHT and only has the bevelled edge on one side.

Wood type: alder

No. 7026 Scraper, pointed



Art. No.	Weight	Length	Width	Handle length		EAN No. 9002793
7026 12	280 g	490 mm	12 mm	300 mm	1 Piece	848662
7026 15	310 g	490 mm	15 mm	300 mm	1 Piece	848679
7026 20	340 g	490 mm	20 mm	300 mm	1 Piece	848686
7026 25	410 g	490 mm	25 mm	300 mm	1 Piece	848693
7026 30	450 g	490 mm	30 mm	300 mm	1 Piece	848709
7026 35	470 g	490 mm	35 mm	300 mm	1 Piece	848716

Spare parts

Art. No.	suitable for	Description		EAN No. 9002793
7099 30	7026 12, 7026 15, 7026 20, 7026 25, 7026 30, 7026 35	Alder-wood handles 300 mm	1 Piece	849348

Used for working across the grain, e.g. bowls, plates etc. When the first stages of work have been completed with a spindle or bowl gouge these tools are used to give a smooth finish on all surfaces. These scrapers should be used with burr on edge. The iron is POINTED and bevelled.

Wood type: alder

No. 7028 Oval-chisel, skew



Art. No.	Weight	Length	Width	Handle length		EAN No. 9002793
7028 12	250 g	490 mm	12 mm	300 mm	1 Piece	848785
7028 15	300 g	490 mm	15 mm	300 mm	1 Piece	848792
7028 20	350 g	490 mm	20 mm	300 mm	1 Piece	848808
7028 25	360 g	490 mm	25 mm	300 mm	1 Piece	848815
7028 30	430 g	490 mm	30 mm	300 mm	1 Piece	848822
7028 35	480 g	490 mm	35 mm	300 mm	1 Piece	848839

Spare parts

Art. No.	suitable for	Description		EAN No. 9002793
7099 30	7028 12, 7028 15, 7028 20, 7028 25, 7028 30, 7028 35	Alder-wood handles 300 mm	1 Piece	849348

Our oval chisels are a logical improvement of the flat chisels. We have been producing our HSS oval skew chisels for years. Due to their perfect shape they have become an indispensable tool for woodturners. A HSS oval skew chisel has a number of advantages over the standard square chisel: - Because of its oval shape the tool is automatically in the correct cutting position and is therefore safer to use. - The oval form enables the tool to glide effortlessly along the tool rest. - The oval form permits fine work on all round shapes. - Particularly beginners will find it easy to achieve clean cuts with this tool.

Wood type: alder

NOVELTY!

No. 7029 Round turning tool



Art. No.	Weight	Length	Width	Handle length		EAN No. 9002793
7029 10	340 g	480 mm	10 mm	300 mm	1 Piece	952932
7029 13	460 g	480 mm	13 mm	300 mm	1 Piece	953229
7029 16	620 g	480 mm	16 mm	300 mm	1 Piece	953236

HSS round steel guarantees high stability, glides particularly well over the tool rest, for working long wood, for pointed fillets and details, clean concave-convex shapes, for finishing straight or curved surfaces, for turning out very narrow wood fillets, for micro turning work.

Wood type: alder

No. 7030 Scraper, round/side cut



Art. No.	Weight	Length	Width	Handle length		EAN No. 9002793
7030 15	300 g	490 mm	15 mm	300 mm	1 Piece	848907
7030 25	370 g	490 mm	25 mm	300 mm	1 Piece	848914

Spare parts

Art. No.	suitable for	Description		EAN No. 9002793
7099 30	7030 15, 7030 25	Alder-wood handles 300 mm	1 Piece	849348

Ideal tool for blending inside curves and curved bottoms of vessels and boxes. Also ideal for undercutting work.

Wood type: alder

ONLY WHILE STOCKS LAST!

No. 7032 HSS swivel hook



Art. No.	Weight	Width	Handle length		EAN No.
7032 12	660 g	12 mm	400 mm	1 Piece	861999
7032 17	670 g	17 mm	400 mm	1 Piece	862002

Spare parts

Art. No.	suitable for	Description		EAN No.
7099 40	7032 12, 7032 17	Alder-wood handles 400 mm	1 Piece	849355

For turning out cylindrical end-grain wooden vessels.

Wood type: alder

No. 7035 Scraper, square/side cut



Art. No.	Weight	Length	Width	Handle length		EAN No.
7035 15	320 g	490 mm	15 mm	300 mm	1 Piece	848945
7035 25	380 g	490 mm	25 mm	300 mm	1 Piece	848952

Spare parts

Art. No.	suitable for	Description		EAN No.
7099 30	7035 15, 7035 25	Alder-wood handles 300 mm	1 Piece	849348

Ideal tool for blending inside squares and square bottoms of boxes. Also ideal for under-cutting work.

Wood type: alder

No. 7037 Multi-Tip scraper



Art. No.	Weight	Length	Handle length		EAN No.
7037 03	460 g	490 mm	300 mm	1 Piece	850337

Spare parts

Art. No.	suitable for	Description		EAN No.
7037 91	7037 03	Mould plate, round	1 Piece	851983
7037 92	7037 03	Mould plate, square	1 Piece	851990
7037 93	7037 03	Mould plate, pear shape	1 Piece	852003
7099 30	7037 03	Alder-wood handles 300 mm	1 Piece	849348

With 3 different shaped tips. Ideal tool for blending inside curves and squares. Developed to offer the full range of scraper shapes on one handle, with round, square and pear shaped cutters.

Wood type: alder

NOTE:

Risk of injury! As with all woodturning tools with screw connections, it is particularly important with our woodturning interchangeable plate system (DWS) to check the connection screws of the individual parts for tightness before each use, as micro-vibrations during woodturning can loosen the screws over time.

No. 7040 Captive ring tool



Art. No.	Weight	Length	Width	Handle length		EAN No.
7040 06	230 g	370 mm	6 mm	300 mm	1 Piece	848983
7040 10	250 g	370 mm	10 mm	300 mm	1 Piece	848990
7040 12	250 g	370 mm	12 mm	300 mm	1 Piece	849003

Spare parts

Art. No.	suitable for	Description		EAN No.
7099 30	7040 06, 7040 10, 7040 12	Alder-wood handles 300 mm	1 Piece	849348

To be used right or left. Specially designed for producing rings that are captured by the workpiece and feature a double bevel which results in only one tool being necessary to complete a ring.

Wood type: alder

No. 7038 Ringcutter, head changeable



Art. No.	Weight	Length	Width	Handle length		EAN No.
7038 12	640 g	650 mm	12 mm	400 mm	1 Piece	868859
7038 20	650 g	700 mm	20 mm	400 mm	1 Piece	868842

Spare parts

Art. No.	suitable for	Description		EAN No.
7039 12	7038 12	HSS-Cuttinghead 12 mm	1 Piece	868835
7039 20	7038 20	HSS-Cuttinghead 20 mm	1 Piece	868828
7099 40	7038 12, 7038 20	Alder-wood handles 400 mm	1 Piece	849355

Used exclusively for turning out end grain (longitudinal wood), HSS cutting head replaceable.

Wood type: alder

No. 7042 HSS Ballcutter with handle



Art. No.	Weight	Width	Handle length		EAN No.
7042 14	660 g	14 mm	400 mm	1 Piece	876245
7042 19	670 g	19 mm	400 mm	1 Piece	876252

Spare parts

Art. No.	suitable for	Description		EAN No.
7043 14	7042 14	HSS cutting head 14 mm	1 Piece	876269
7043 19	7042 19	HSS cutting head 19 mm	1 Piece	876276
7099 40	7042 14, 7042 19	Alder-wood handles 400 mm	1 Piece	849355

For turning cups, cans, goblets, etc.

Wood type: alder

No. 7050 HSS Parting tool



Art. No.	Weight	Length	Width	Height	Handle length		EAN No.
7050 03	250 g	480 mm	15 mm	3 mm	300 mm	1 Piece	849089
7050 06	300 g	480 mm	15 mm	6 mm	300 mm	1 Piece	849096

Spare parts

Art. No.	suitable for	Description		EAN No.
7099 30	7050 03, 7050 06	Alder-wood handles 300 mm	1 Piece	849348

The sharp edges give clean cuts and the tapered profile reduces the risk of binding in the cut.

Wood type: alder

No. 7055 HSS Parting tool



Art. No.	Weight	Length	Width	Height	Handle length		EAN No.
7055 06	290 g	480 mm	15 mm	6 mm	300 mm	1 Piece	849126

Spare parts

Art. No.	suitable for	Description		EAN No.
7099 30	7055 06	Alder-wood handles 300 mm	1 Piece	849348

The tapered profile reduces the risk of binding in the cut. The milled flute running along the bottom edge creates two sharp side cuts.

Wood type: alder

No. 7056 HSS Pairing tool, square



Art. No.	Weight	Length	Width	Height	Handle length		EAN No.
7056 05	240 g	445 mm	5 mm	5 mm	300 mm	1 Piece	861388
7056 10	300 g	445 mm	10 mm	10 mm	300 mm	1 Piece	861395

Spare parts

Art. No.	suitable for	Description		EAN No.
7099 30	7056 05, 7056 10	Alder-wood handles 300 mm	1 Piece	849348

This tool is square shaped to give clearance to the cut. The special profile reduces the risk of binding in the cut.

Wood type: alder

NOVELTY!

No. 7057 Parting Tool Knife-Shaped



Art. No.	Weight	Length	Width	Height	Handle length		EAN No.
7057 02	300 g	280 mm	2 mm	30 mm	150 mm	1 Piece	954356

Particularly material-saving for fine cuts or narrow grooves, with 30mm wide blade for secure guidance, with alderwood handle.

Wood type: alder

No. 7058 HSS Parting tool, diamond shape



Art. No.	Weight	Length	Width	Handle length		EAN No.
7058 05	330 g	480 mm	5 mm	300 mm	1 Piece	849140

Spare parts

Art. No.	suitable for	Description		EAN No.
7099 30	7058 05	Alder-wood handles 300 mm	1 Piece	849348

This tool is diamond shaped to give clearance to the cut. The special profile reduces the risk of binding in the cut.

Wood type: alder



WOODTURNING
CHANGE
SYSTEM

ENTSCHEIDUNG FÜR QUALITÄT

Interchangeable plate system (DWS)

NOVELTY!

No. 7044 DWS Basic Set with 3 cutting plates, without joint



Art. No.	Weight	Length	Number of parts		EAN No.
7044 25	600 g	710 mm	5 Pieces	1 Piece	953953



Art. No. 7042 30 Art. No. 7044 01 Art. No. 7044 30 Art. No. 7044 31 Art. No. 7044 32

Special tool for lengthwise, crosscutting and turning work, our cutting plates guarantee a very long service life. The holder bar can also be used for our ring knives, boring hooks and ball cutter heads. Delivered with matching allen key.

SET CONSISTS OF:

Art. No. 7042 30 Holder bar with handle
Art. No. 7044 01 Plate head
Art. No. 7044 30 Shape plate, round

Art. No. 7044 31 Shape plate, angular
Art. No. 7044 32 Shape plate, pear shape



NOTE:

Risk of injury! As with all woodturning tools with screw connections, it is particularly important with our DWS turning system to check the connection screws of the individual parts for tightness before each use, as micro-vibrations during woodturning can loosen the screws over time.

NOVELTY!

No. 7044 DWS Turning system with 3 cutting plates, with handle



Art. No.	Weight	Length	Number of parts		EAN No.
7044 22	600 g	675 mm	7 Pieces	1 Piece	953793



Art. No. 7044 13 Art. No. 7044 12 Art. No. 7044 11 Art. No. 7099 40 Art. No. 7044 30 Art. No. 7044 31



Art. No. 7044 32

Our multi-functional changing system can be used with our classic turning tools, such as the ring and ball cutter, in addition to our new DWS plates. With adjustable joint pieces, suitable for lengthwise & crosswise lumber work as well as for epoxy resin processing. Delivered with matching allen key.

SET CONSISTS OF:

Art. No. 7044 13 Holder bar with joint adapter without handle
 Art. No. 7044 12 Double joint piece
 Art. No. 7044 11 Joint plate head
 Art. No. 7099 40 Alder-wood handles 400 mm

Art. No. 7044 30 Shape plate, round
 Art. No. 7044 31 Shape plate, angular
 Art. No. 7044 32 Shape plate, pear shape



NOTE:

Risk of injury! As with all woodturning tools with screw connections, it is particularly important with our DWS turning system to check the connection screws of the individual parts for tightness before each use, as micro-vibrations during woodturning can loosen the screws over time.

NOVELTY!**No. 7044 Turning interchangeable plate system (DWS) without handle**

Art. No.	Weight	Length	Number of parts		EAN No.
7044 21	380 g	325 mm	3 Pieces	1 Piece	953786



Art. No. 7044 13 Art. No. 7044 12 Art. No. 7044 11

Our multi-functional changing system can be used with our classic turning tools, such as the ring and ball cutter, in addition to our new DWS plates. With adjustable joint pieces, suitable for lengthwise & crosswise lumber work as well as for epoxy resin processing. Delivered with matching allen key.

SET CONSISTS OF:

Art. No. 7044 13 Holder bar with joint adapter without handle
Art. No. 7044 12 Double joint piece

Art. No. 7044 11 Joint plate head

NOVELTY!**No. 7044 Holder rod set with joint with handle**

Art. No.	Weight	Length	Number of parts		EAN No.
7044 24	580 g	660 mm	3 Pieces	1 Piece	953816



Art. No. 7044 13 Art. No. 7044 14 Art. No. 7099 30 Art. No. 7099 40

Our multi-functional changing system can be used with our classic boring tools, such as the ring and ball cutter, in addition to our new DWS plates. With adjustable joint pieces, suitable for lengthwise & crosswise lumber work as well as for epoxy resin processing. Delivered with matching allen key.

SET CONSISTS OF:

Art. No. 7044 13 Holder bar with joint adapter without handle
Art. No. 7044 14 Joint adapter mount

Art. No. 7099 30 Alder-wood handles 300 mm
Art. No. 7099 40 Alder-wood handles 400 mm

NOVELTY!**No. 7044 Holder rod set with joint without handle**

Art. No.	Weight	Length	Number of parts		EAN No.
7044 23	360 g	310 mm	2 Pieces	1 Piece	953809



Art. No. 7044 13 Art. No. 7044 14

Our multi-functional changing system can be used with our classic boring tools, such as the ring and ball cutter, in addition to our new DWS plates. With adjustable joint pieces, suitable for lengthwise & crosswise lumber work as well as for epoxy resin processing. Delivered with matching allen key.

SET CONSISTS OF:

Art. No. 7044 13 Holder bar with joint adapter without handle

Art. No. 7044 14 Joint adapter mount

NOTE:


Risk of injury! As with all woodturning tools with screw connections, it is particularly important with our DWS turning system to check the connection screws of the individual parts for tightness before each use, as micro-vibrations during woodturning can loosen the screws over time.

NOVELTY!
No. 7044 Holder bar with joint adapter without handle


Art. No.	Weight	Length	Width		EAN No. 9002793
7044 13	320 g	270 mm	14 mm	1 Piece	953731

For woodturners who want to turn their handle themselves and equip the joint holder individually with the various joint parts. Delivered with matching allen key.

Accessories


Art. No.	suitable for	Description		EAN No. 9002793
7044 11	7044 13	Joint plate head	1 Piece	953779
7044 12	7044 13	Double joint piece	1 Piece	953748
7044 14	7044 13	Joint adapter mount	1 Piece	953755

NOVELTY!
No. 7042 Holder bar with handle



Art. No.	Weight	Length		EAN No. 9002793
7042 30	530 g	680 mm	1 Piece	896151

For woodturners who want to equip their tool holders individually with our cutting heads. Delivered with matching allen key.

Accessories


Art. No.	suitable for	Description		EAN No. 9002793
7039 12	7042 30	HSS-Cuttinghead 12 mm	1 Piece	868035
7039 20	7042 30	HSS-Cuttinghead 20 mm	1 Piece	868028
7043 14	7042 30	HSS cutting head 14 mm	1 Piece	876269
7043 19	7042 30	HSS cutting head 19 mm	1 Piece	876276
7044 01	7042 30	Plate head	1 Piece	953762

NOVELTY!
No. 7042 Holder bar without handle


Art. No.	Weight	Length		EAN No. 9002793
7042 00	400 g	320 mm	1 Piece	896137

For woodturners who want to turn their handle themselves and equip their tool holder individually with our cutting heads. Delivered with matching allen key.

Accessories

Art. No.	suitable for	Description		EAN No. 9002793
7039 12	7042 00	HSS-Cuttinghead 12 mm	1 Piece	868035
7039 20	7042 00	HSS-Cuttinghead 20 mm	1 Piece	868028
7043 14	7042 00	HSS cutting head 14 mm	1 Piece	876269
7043 19	7042 00	HSS cutting head 19 mm	1 Piece	876276
7044 01	7042 00	Plate head	1 Piece	953762

NOTE:

Risk of injury! As with all woodturning tools with screw connections, it is particularly important with our DWS turning system to check the connection screws of the individual parts for tightness before each use, as micro-vibrations during woodturning can loosen the screws over time.


NOVELTY!

No. 7044 Double joint piece



Art. No.	Weight	Length	Width		EAN No. 9802793
7044 12	25 g	45 mm	14 mm	1 Piece	953748

Woodturners who already have a holder bar with joint adapter mount or DWS joint plate head can use the additional joint piece to adjust the DWS joint plate head differently in order to produce different turning shapes. Ideal for hollow vessels and for back-turning rims.

Accessories					
Art. No.	suitable for	Description		EAN No. 9802793	
7044 11	7044 12	Joint plate head	1 Piece	953779	
7044 14	7044 12	Joint adapter mount	1 Piece	953755	


NOVELTY!

No. 7044 Joint adapter mount



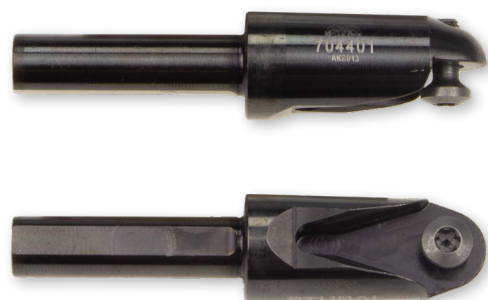
Art. No.	Weight	Length	Width		EAN No. 9802793
7044 14	36 g	52 mm	15 mm	1 Piece	953755


Woodturners who already own the DWS multifunction tool can also use our ring knives and ball cutters on their holder bar with this adapter.

Accessories					
Art. No.	suitable for	Description		EAN No. 9802793	
7039 12	7044 14	HSS-Cuttinghead 12 mm	1 Piece	868035	
7039 20	7044 14	HSS-Cuttinghead 20 mm	1 Piece	868028	
7043 14	7044 14	HSS cutting head 14 mm	1 Piece	876269	
7043 19	7044 14	HSS cutting head 19 mm	1 Piece	876276	
7044 01	7044 14	Plate head	1 Piece	953762	


NOVELTY!

No. 7044 Plate head



Art. No.	Weight	Length	Width		EAN No. 9802793
7044 01	35 g	60 mm	15 mm	1 Piece	953762

Woodturners who already use our ring cutters or ball cutters can also use their holder bar for this plate head. For holding the various plates. Supplied with matching Allen key.

Accessories					
Art. No.	suitable for	Description		EAN No. 9802793	
7044 30	7044 01	Shape plate, round	1 Piece	953823	
7044 31	7044 01	Shape plate, angular	1 Piece	953830	
7044 32	7044 01	Shape plate, pear shape	1 Piece	953847	

NOTE:

Risk of injury! As with all woodturning tools with screw connections, it is particularly important with our DWS turning system to check the connection screws of the individual parts for tightness before each use, as micro-vibrations during woodturning can loosen the screws over time.

NOVELTY!


No. 7044 Joint plate head



Art. No.	Weight	Length	Width		EAN No. 9002793
7044 11	25 g	42 mm	15 mm	1 Piece	953779

Turners who already use our tools with joint can also use their holder bar for this joint plate head. For holding the different plates. Supplied with matching Allen key.

Accessories

Art. No.	suitable for	Description		EAN No. 9002793
7044 31	7044 11	Shape plate, angular	1 Piece	953830
7044 30	7044 11	Shape plate, round	1 Piece	953823
7044 32	7044 11	Shape plate, pear shape	1 Piece	953847

NOVELTY!

No. 7044 Shape plate, round



Art. No.	Weight	Length	Width		EAN No. 9002793
7044 30	6 g	12 mm	12 mm	1 Piece	953823

With improved cutting geometry for ripping & crosscutting, suitable for epoxy resin processing as well as for undercutting on wooden vessels.

NOVELTY!

No. 7044 Shape plate, angular



Art. No.	Weight	Length	Width		EAN No. 9002793
7044 31	6 g	12 mm	12 mm	1 Piece	953830

With improved cutting geometry suitable for ripping & crosscutting as well as for epoxy resin machining.

NOVELTY!

No. 7044 Shape plate, pear shape




Art. No.	Weight	Length	Width		EAN No. 9002793
7044 32	14 g	28 mm	13 mm	1 Piece	953847

With improved cutting geometry suitable for ripping & crosscutting as well as for epoxy resin machining.

No. 2240 Hexagon key



Art. No.	Weight	Length	L1	Wrench size		EAN No. 9002793
2240 02	10 g	56 mm	18 mm	2.5 mm	1 Piece	204802
2240 03	10 g	63 mm	20 mm	3 mm	1 Piece	204819

Chrome-vanadium-steel, nickel plated.
Standard: DIN 911 - Type: Hexagonal

No. 2260 Torx key




Art. No.	Weight	Length	L1	Torx		EAN No. 9002793
2260 15	10 g	54 mm	18 mm	15	1 Piece	205588

Chrome-vanadium-steel, burnished.
Type: Torx

No. 7044 Torx screw for DWS articles



Art. No.	Weight	Length	Width		EAN No.
7044 33	1 g	10 mm	5 mm	1 Piece	958729

Only available on request!

No. 7044 Cylinder screw for DWS articles



Art. No.	Weight	Length	Width		EAN No.
7044 34	2 g	13 mm	7 mm	1 Piece	958736


Only available on request!

Standard: DIN 7984

NOVELTY!

No. 5000 Roll-up bag for woodturning tools 8-pcs.



Art. No.	Weight	Length	Width		EAN No.
5000R6	250 g	770 mm	710 mm	1 Piece	953380

The rolling bag allows you to safely transport and store up to 3 woodturning tools (**max. 730 mm total length**) without damaging the cutting edge of your irons. Four pockets allow small items to be stored safely.

Tip: Put your individual Stubai HSS woodturning iron set together and we will send it to you in the rolling bag.

**CUSTOMISED
SETS**





ENTSCHEIDUNG FÜR QUALITÄT

© STUBAI ZMV GmbH

Turning tool sets

No. S707 Woodturning tool set, 4 pcs.



13 mm



19 mm



13 mm




5 mm

Art. No. 7008 19

Roughing-out gouge, heavy duty 19 mm

Art. No. 7005 13

HSS Spindle gouge 13 mm

Art. No.	Weight	Number of parts		EAN No.
S7070 04	1500 g	4 Pieces	1 Piece	9802793 896847



Art. No. 7008 19 Art. No. 7005 13 Art. No. 7010 13 Art. No. 7058 05

Irons are packed individually and delivered like standard irons.

Wood type: alder

SET CONSISTS OF:

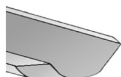
Art. No. 7010 13

Bowl gouge, deep fluted 13 mm

Art. No. 7058 05

HSS Parting tool, diamond shape 5 mm

No. S707 Woodturning tool set, 5 pcs.



13 mm



19 mm



13 mm



25 mm



5 mm

Art. No. 7008 19


Roughing-out gouge, heavy duty 19 mm

Art. No. 7005 13

HSS Spindle gouge 13 mm

Art. No. 7010 13

Bowl gouge, deep fluted 13 mm

Art. No.	Weight	Number of parts		EAN No.
S7070 05	1900 g	5 Pieces	1 Piece	9802793 896854



Art. No. 7008 19 Art. No. 7005 13 Art. No. 7010 13 Art. No. 7058 05 Art. No. 7020 25

Irons are packed individually and delivered like standard irons.

Wood type: alder

SET CONSISTS OF:

Art. No. 7058 05

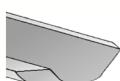
HSS Parting tool, diamond shape 5 mm

Art. No. 7020 25

Chisel, skew 25 mm

NOVELTY!

No. S700 Woodturning set, 3 pcs. "startup set"



22 mm




13 mm



15x3 mm

Art. No. 7005 22
Art. No. 7030 15

HSS Spindle gouge 22 mm
Scraper, round/side cut 15 mm

Art. No.	Weight	Number of parts		EAN No.
S7000 01	965 g	3 Pieces	1 Piece	950983



Art. No. 7005 22 Art. No. 7030 15 Art. No. 7050 03

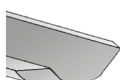
Startup set recommended by master woodturners. Set in rolling bag (5000R2) - also available separately.

SET CONSISTS OF:

Art. No. 7050 03 HSS Parting tool 15x3 mm

NOVELTY!

No. S7000 Woodturning set, 4 pcs. "basic equipment"



27 mm



16 mm




25 mm



15x6 mm

Art. No. 7005 27
Art. No. 7010 16

HSS Spindle gouge 27 mm
Bowl gouge, deep fluted 16 mm

Art. No.	Weight	Number of parts		EAN No.
S7000 02	1760 g	4 Pieces	1 Piece	950990



Art. No. 7005 27 Art. No. 7010 16 Art. No. 7030 25 Art. No. 7050 06

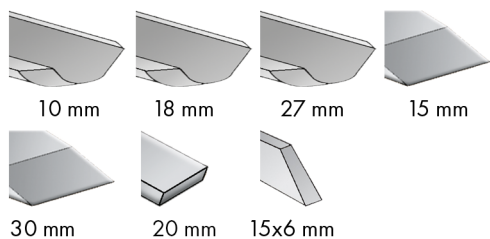
Basic equipment recommended by master woodturners. Set in rolling bag (5000R2) - also available separately.

SET CONSISTS OF:


Art. No. 7030 25 Scraper, round/side cut 25 mm
Art. No. 7050 06 HSS Parting tool 15x6 mm

NOVELTY!

No. S7090 Turning iron basic set 7 pcs. in roll bag



Art. No. 7005 10	HSS Spindle gouge 10 mm
Art. No. 7005 18	HSS Spindle gouge 18 mm
Art. No. 7005 27	HSS Spindle gouge 27 mm
Art. No. 7020 15	Chisel, skew 15 mm

Art. No.	Weight	Number of parts		EAN No.
S7090 07	2830 g	7 Pieces	1 Piece	952352



Art. No. 7005 10 Art. No. 7005 18 Art. No. 7005 27 Art. No. 7020 15 Art. No. 7020 30 Art. No. 7024 20



Art. No. 7050 06

Set in rolling bag (5000R2) - also available separately.

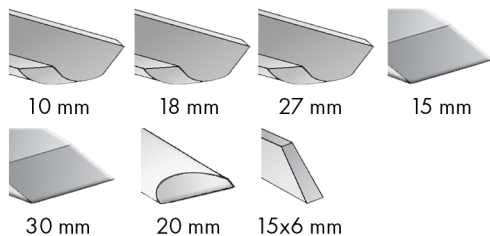
Wood type: alder

SET CONSISTS OF:


Art. No. 7020 30	Chisel, skew 30 mm
Art. No. 7024 20	Scraper, square end 20 mm
Art. No. 7050 06	HSS Parting tool 15x6 mm

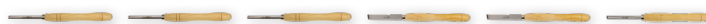
NOVELTY!

No. S7091 Turning iron set 7 pcs. in roll bag



Art. No. 7005 10	HSS Spindle gouge 10 mm
Art. No. 7005 18	HSS Spindle gouge 18 mm
Art. No. 7005 27	HSS Spindle gouge 27 mm
Art. No. 7020 15	Chisel, skew 15 mm

Art. No.	Weight	Number of parts		EAN No.
S7091 07	4230 g	7 Pieces	1 Piece	952468



Art. No. 7005 10 Art. No. 7005 18 Art. No. 7005 27 Art. No. 7020 15 Art. No. 7020 30 Art. No. 7028 20



Art. No. 7050 06

Set in rolling bag (5000R2) - also available separately.

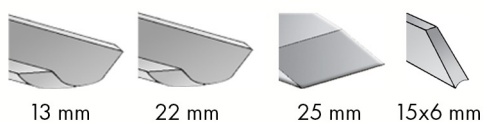
Wood type: alder

SET CONSISTS OF:

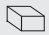
Art. No. 7020 30	Chisel, skew 30 mm
Art. No. 7028 20	Oval-chisel, skew 20 mm
Art. No. 7050 06	HSS Parting tool 15x6 mm

NOVELTY!

No. S7092 Turning iron set 4 pcs. in roll bag



Art. No. 7005 13 HSS Spindle gouge 13 mm
Art. No. 7005 22 HSS Spindle gouge 22 mm

Art. No.	Weight	Number of parts		EAN No. 9802793
S7092 04	1665 g	4 Pieces	1 Piece	952307



Art. No. 7005 13 Art. No. 7005 22 Art. No. 7020 25 Art. No. 7055 06

Set in rolling bag (5000R2) - also available separately.
Wood type: alder

SET CONSISTS OF:

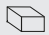
Art. No. 7020 25 Chisel, skew 25 mm
Art. No. 7055 06 HSS Parting tool 15x6 mm

NOVELTY!

No. S7094 Woodturning tool set 4 pcs. for crossbar in roll bag



Art. No. 7010 13 Bowl gouge, deep fluted 13 mm
Art. No. 7022 20 Scraper, round nose 20 mm

Art. No.	Weight	Number of parts		EAN No. 9802793
S7094 04	1860 g	4 Pieces	1 Piece	952321



Art. No. 7010 13 Art. No. 7022 20 Art. No. 7024 20 Art. No. 7030 25

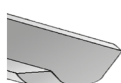
Set in rolling bag (5000R2) - also available separately.
Wood type: alder

SET CONSISTS OF:

Art. No. 7024 20 Scraper, square end 20 mm
Art. No. 7030 25 Scraper, round/side cut 25 mm

NOVELTY!

No. S7000 Turning iron set no. 1, 4 pcs. in roll-up bag



22 mm



13 mm



16 mm




15x6 mm

Art. No. 7005 22

HSS Spindle gouge 22 mm

Art. No. 7006 13

Spindle form tube "English form" 13 mm

Art. No.	Weight	Number of parts		EAN No.
S7000 03	2000 g	4 Pieces	1 Piece	953489



Art. No. 7005 22 Art. No. 7006 13 Art. No. 7029 16 Art. No. 7050 06

Suitable for turning long wood, roughing, cutting, shaping, working out fine details, for tool handles, table & chair legs, stair posts, pens etc., also suitable for small cross-grain work e.g. for small cups and plates. Set in rolling bag (5000R3) - also available separately.

SET CONSISTS OF:

Art. No. 7029 16

Round turning tool 160 mm

Art. No. 7050 06

HSS Parting tool 15x6 mm

NOVELTY!

No. S7000 Turning iron set no. 2, 4 pcs. in roll-up bag



27 mm



10 mm



13 mm




15x3 mm

Art. No. 7005 27

HSS Spindle gouge 27 mm

Art. No. 7006 10

Spindle form tube "English form" 10 mm

Art. No.	Weight	Number of parts		EAN No.
S7000 04	1740 g	4 Pieces	1 Piece	953496



Art. No. 7005 27 Art. No. 7006 10 Art. No. 7010 13 Art. No. 7050 03

Beginner's set for long & cross wood turning, roughing, parting, shaping & hollowing. Set in rolling bag (5000R2) - also available separately.

SET CONSISTS OF:

Art. No. 7010 13

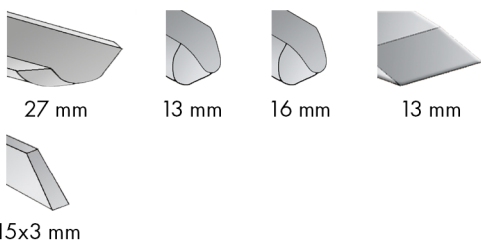
Bowl gouge, deep fluted 13 mm

Art. No. 7050 03

HSS Parting tool 15x3 mm

NOVELTY!

No. S7000 Turning iron set no. 3, 5 pcs. in roll-up bag



Art. No. 7005 27 HSS Spindle gouge 27 mm
 Art. No. 7006 13 Spindle form tube "English form" 13 mm
 Art. No. 7010 16 Bowl gouge, deep fluted 16 mm

SET CONSISTS OF:

Art. No. 7029 13 Round turning tool 13 mm
 Art. No. 7050 03 HSS Parting tool 15x3 mm

Art. No.	Weight	Number of parts		EAN No.
S7000 05	2530 g	5 Pieces	1 Piece	952963

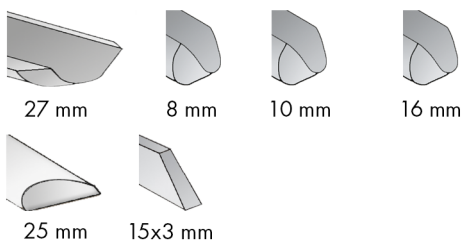


Art. No. 7005 27 Art. No. 7006 13 Art. No. 7010 16 Art. No. 7029 13 Art. No. 7050 03

Set for long & cross wood turning: 5 useful shapes with which even larger projects become possible. Set in rolling bag (5000R2) - also available separately.

NOVELTY!

No. S7000 Turning iron set no. 4, 6 pcs. in roll-up bag



Art. No. 7005 27 HSS Spindle gouge 27 mm
 Art. No. 7006 08 Spindle form tube "English form" 8 mm
 Art. No. 7006 10 Spindle form tube "English form" 10 mm

SET CONSISTS OF:

Art. No. 7010 16 Bowl gouge, deep fluted 16 mm
 Art. No. 7028 25 Oval-chisel, skew 25 mm
 Art. No. 7050 03 HSS Parting tool 15x3 mm

Art. No.	Weight	Number of parts		EAN No.
S7000 06	2500 g	6 Pieces	1 Piece	953502



Art. No. 7005 27 Art. No. 7006 08 Art. No. 7006 10 Art. No. 7010 16 Art. No. 7028 25 Art. No. 7050 03

Set for long & cross wood turning: This large basic set has been selected and recommended by master woodturners. Set in rolling bag (5000R2) - also available separately.



ENTSCHEIDUNG FÜR QUALITÄT


Alder micro handle chisel

No. 7081 Micro spindle gouge



Art. No.	Weight	Length	Width	Handle length		EAN No.
7081 03	75 g	230 mm	4 mm	160 mm	1 Piece	849188

Spare parts

Art. No.	suitable for	Description		EAN No.
7099 16	7081 03	Alder-wood handles 160 mm	1 Piece	849324

Milled from HSS round steel with flat flute. Due to the rigid shape especially suitable for deeper grooves in long wood, for very fine and small miniature work, such as key rings, pens or similar small parts.


Wood type: alder

No. 7082 Micro spindle gouge



Art. No.	Weight	Length	Width	Handle length		EAN No.
7082 06	90 g	230 mm	6 mm	160 mm	1 Piece	849195

Spare parts

Art. No.	suitable for	Description		EAN No.
7099 16	7082 06	Alder-wood handles 160 mm	1 Piece	849324

Milled from HSS round steel with flat flute. Due to the rigid shape especially suitable for deeper grooves in long wood, for very fine and small miniature work, such as key rings, pens or similar small parts.

Wood type: alder

No. 7083 Micro chisel, skew



Art. No.	Weight	Length	Width	Handle length		EAN No.
7083 06	82 g	230 mm	6 mm	160 mm	1 Piece	849201

Spare parts

Art. No.	suitable for	Description		EAN No.
7099 16	7083 06	Alder-wood handles 160 mm	1 Piece	849324

This bevelled flat chisel is indispensable for grooving and parting off. Mainly used for moulding.


Wood type: alder

No. 7084 Micro scraper, round nose



Art. No.	Weight	Length	Width	Handle length		EAN No.
7084 06	85 g	230 mm	6 mm	160 mm	1 Piece	849218

Spare parts

Art. No.	suitable for	Description		EAN No.
7099 16	7084 06	Alder-wood handles 160 mm	1 Piece	849324

Used for working across the grain, e.g. bowls, plates etc.

Wood type: alder

No. 7085 Micro scraper, pointed



Art. No.	Weight	Length	Width	Handle length		EAN No.
7085 02	90 g	230 mm	6 mm	160 mm	1 Piece	849322

Spare parts

Art. No.	suitable for	Description		EAN No.
7099 16	7085 02	Alder-wood handles 160 mm	1 Piece	849324

Used for working across the grain, e.g. bowls, plates etc.

Wood type: alder

No. 7087 Micro hollowing scraper, square, 80°



Art. No.	Weight	Length	Width	Handle length		EAN No.
7087 06	120 g	240 mm	6 mm	160 mm	1 Piece	850313

Spare parts

Art. No.	suitable for	Description		EAN No.
7099 16	7087 06	Alder-wood handles 160 mm	1 Piece	849324

Special tool for fine machining of internal surfaces and curves, e.g. on cans or bowls, as well as for undercutting turned work.

Wood type: alder

Chisels without handle

No. 5905 Spindle gouge without handle



Art. No.	Weight	Length	Width		EAN No.
5905 07	70 g	180 mm	7 mm	1 Piece	847566
5905 10	120 g	180 mm	10 mm	1 Piece	847573
5905 13	140 g	180 mm	13 mm	1 Piece	847580
5905 18	190 g	180 mm	18 mm	1 Piece	847597
5905 22	230 g	180 mm	22 mm	1 Piece	847603
5905 27	260 g	180 mm	27 mm	1 Piece	847610
5905 32	300 g	180 mm	32 mm	1 Piece	847627

Almost all curved shapes can be turned and made to a good smooth finish with this tool.

NOVELTY!

No. 5906 Spindle form tube "English form" without handle




Art. No.	Weight	Length	Width		EAN No.
5906 08	650 g	180 mm	8 mm	1 Piece	953199
5906 10	120 g	180 mm	10 mm	1 Piece	953205
5906 13	220 g	180 mm	13 mm	1 Piece	953212

Milled from HSS round steel, very high stability despite the small diameter, does not start swinging so easily, lies in the hand more calmly, ideal for shaping, fine profiling in lengthwise and crosswise wood, for small detailed work, for deep grooves in long wood.

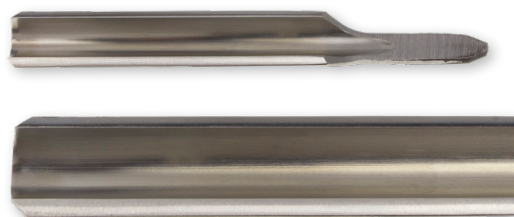
No. 5910 Bowl gouge, deep fluted, without handle




Art. No.	Weight	Length	Width		EAN No. 9002793
5910 08	140 g	300 mm	8 mm	1 Piece	847658
5910 10	200 g	300 mm	10 mm	1 Piece	911090
5910 13	300 g	300 mm	13 mm	1 Piece	847665
5910 16	450 g	300 mm	16 mm	1 Piece	847672
5910 20	740 g	300 mm	20 mm	1 Piece	508740
5910 25	1400 g	420 mm	25 mm	1 Piece	508757
5910 13L	390 g	500 mm	13 mm	1 Piece	883588
5910 16L	540 g	500 mm	16 mm	1 Piece	883250
5910 16XL	800 g	700 mm	16 mm	1 Piece	952673
5910 20XL	850 g	700 mm	20 mm	1 Piece	952680
5910 25XL	900 g	700 mm	25 mm	1 Piece	952697

The performance of the tool is particularly important when working against the grain. Our special HSS bowl gouge is far more suitable for this kind of work than conventional gouges. The special shape of this tool allows shavings to be removed quickly and efficiently and prevents the tool from being caught in the wood during turning.

No. 5908 Roughing-out gouge, without handle, heavy duty




Art. No.	Weight	Length	Width		EAN No. 9002793
5908 19	250 g	180 mm	19 mm	1 Piece	847634
5908 32	390 g	180 mm	32 mm	1 Piece	847641

For the first work step on the lathe. The gouge can usually be used to turn away wide chips and roughly pre-turn the basic shape.

No. 5920 Chisel without handle, skew




Art. No.	Weight	Length	Width		EAN No. 9002793
5920 12	120 g	180 mm	12 mm	1 Piece	508849
5920 15	150 g	180 mm	15 mm	1 Piece	508856
5920 20	190 g	180 mm	20 mm	1 Piece	508863
5920 25	240 g	180 mm	25 mm	1 Piece	508870
5920 30	280 g	180 mm	30 mm	1 Piece	508887
5920 35	320 g	180 mm	35 mm	1 Piece	508894

This skew chisel is indispensable for parting and for making V-cuts. Also for shaping along the grain.

No. 5922 Scraper without handle, round nose




Art. No.	Weight	Length	Width		EAN No. 9002793
5922 12	120 g	180 mm	12 mm	1 Piece	847689
5922 15	150 g	180 mm	15 mm	1 Piece	847696
5922 20	190 g	180 mm	20 mm	1 Piece	847702
5922 25	240 g	180 mm	25 mm	1 Piece	847719
5922 30	280 g	180 mm	30 mm	1 Piece	847726
5922 35	320 g	180 mm	35 mm	1 Piece	847733

Used for working across the grain, e.g. bowls, plates etc. When the first stages of work have been completed with a spindle or bowl gouge these tools are used to give a smooth finish on all surfaces. These scrapers should be used with burr on edge. The iron is ROUND and only has the bevelled edge on one side.

No. 5924 Scraper without handle, square end




Art. No.	Weight	Length	Width		EAN No. 9002793
5924 12	120 g	180 mm	12 mm	1 Piece	847740
5924 15	150 g	180 mm	15 mm	1 Piece	847757
5924 20	190 g	180 mm	20 mm	1 Piece	847764
5924 25	240 g	180 mm	25 mm	1 Piece	847771
5924 30	280 g	180 mm	30 mm	1 Piece	847788
5924 35	320 g	180 mm	35 mm	1 Piece	847795

Used for working across the grain, e.g. bowls, plates etc. When the first stages of work have been completed with a spindle or bowl gouge these tools are used to give a smooth finish on all surfaces. These scrapers should be used with burr on edge.

No. 5926 Scraper without handle, pointed




Art. No.	Weight	Length	Width	Height		EAN No. 9002793
5926 12	120 g	180 mm	12 mm	6 mm	1 Piece	847801
5926 15	150 g	180 mm	15 mm		1 Piece	847818
5926 20	190 g	180 mm	20 mm		1 Piece	847825
5926 25	240 g	180 mm	25 mm		1 Piece	847832
5926 30	280 g	180 mm	30 mm		1 Piece	847849
5926 35	320 g	180 mm	35 mm		1 Piece	847856

Used for working across the grain, e.g. bowls, plates etc. When the first stages of work have been completed with a spindle or bowl gouge these tools are used to give a smooth finish on all surfaces. These scrapers should be used with burr on edge.

No. 5928 Oval-Chisel without handle




Art. No.	Weight	Length	Width		EAN No. 9002793
5928 12	90 g	180 mm	12 mm	1 Piece	847863
5928 15	110 g	180 mm	15 mm	1 Piece	847870
5928 20	180 g	180 mm	20 mm	1 Piece	847887
5928 25	210 g	180 mm	25 mm	1 Piece	847894
5928 30	270 g	180 mm	30 mm	1 Piece	847900
5928 35	330 g	180 mm	35 mm	1 Piece	847917

Our oval chisels are a logical improvement of the flat chisels. We have been producing our HSS oval skew chisels for years. Due to their perfect shape they have become an indispensable tool for woodturners. A HSS oval skew chisel has a number of advantages over the standard square chisel: - Because of its oval shape the tool is automatically in the correct cutting position and is therefore safer to use. - The oval form enables the tool to glide effortlessly along the tool rest. - The oval form permits fine work on all round shapes. - Particularly beginners will find it easy to achieve clean cuts with this tool.

NOVELTY!

No. 5929 Round turning tool




Art. No.	Weight	Length	Width		EAN No. 9002793
5929 10	160 g	180 mm	10 mm	1 Piece	953243
5929 13	280 g	180 mm	13 mm	1 Piece	953250
5929 16	440 g	180 mm	16 mm	1 Piece	953267

HSS round steel guarantees high stability, glides particularly well over the tool rest, for working long wood, for pointed fillets and details, clean concave-convex shapes, for finishing straight or curved surfaces, for turning out very narrow wood fillets, for micro turning work.

No. 5930 Scraper without handle, round/side cut

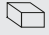


Art. No.	Weight	Length	Width		EAN No. 9002793
5930 15	140 g	180 mm	15 mm	1 Piece	508917
5930 25	190 g	180 mm	25 mm	1 Piece	508931

Ideal tool for blending inside curves and curved bottoms of vessels and boxes. Ideal also for undercutting work.

No. 5935 Scraper without handle, square/side cut



Art. No.	Weight	Length	Width		EAN No. 9002793
5935 15	150 g	180 mm	15 mm	1 Piece	847924
5935 25	210 g	180 mm	25 mm	1 Piece	847931


Ideal tool for blending inside squares and square bottoms of boxes. Ideal also for undercutting work.

No. 5938 Ring knife, HSS cutting head exchangeable without handle



Art. No.	Weight	Width		EAN No. 9002793
5938 12	500 g	12 mm	1 Piece	868073
5938 20	530 g	20 mm	1 Piece	868066

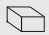
Spare parts

Art. No.	suitable for	Description		EAN No. 9002793
7039 12	5938 12	HSS-Cuttinghead 12 mm	1 Piece	868035
7039 20	5938 20	HSS-Cuttinghead 20 mm	1 Piece	868028

Used exclusively for turning out end grain (longitudinal wood), HSS cutting head replaceable.

No. 5940 Captive ring tool without handle, comb.



Art. No.	Weight	Length	Width		EAN No. 9002793
5940 06	90 g	120 mm	6 mm	1 Piece	847948
5940 10	90 g	120 mm	10 mm	1 Piece	847955
5940 12	130 g	120 mm	12 mm	1 Piece	508962

To be used right or left. Specially designed for producing rings that are captured by the workpiece and feature a double bevel which results in only one tool being necessary to complete a ring.

No. 5950 Parting tool without handle, tapered profile



Art. No.	Weight	Length	Width	Height		EAN No. 9002793
5950 03	70 g	180 mm	15 mm	3 mm	1 Piece	847986
5950 06	130 g	180 mm	15 mm	6 mm	1 Piece	847993

The sharp edges give clean cuts and the tapered profile reduces the risk of binding in the cut.

No. 5955 Parting tool without handle, tapered, milled groove



Art. No.	Weight	Length	Width	Height		EAN No.
5955 06	130 g	180 mm	15 mm	6 mm	1 Piece	848006

The tapered profile reduces the risk of binding in the cut. The milled flute running along the bottom edge creates two sharp spurs at the cutting face.

No. 5956 Parting tool without handle, square



Art. No.	Weight	Length	Width	Height		EAN No.
5956 05	70 g	180 mm	5 mm	5 mm	1 Piece	861401
5956 10	130 g	180 mm	10 mm	10 mm	1 Piece	861418

This tool is square shaped to give clearance to the cut. The special profile reduces the risk of binding in the cut.

No. 5958 Parting tool without handle, diamond shape



Art. No.	Weight	Length	Width		EAN No.
5958 05	120 g	180 mm	5 mm	1 Piece	848013

This tool is diamond shaped to give clearance to the cut. The special profile reduces the risk of binding in the cut.

STUBAI

Profi HSS-Drehsehlwerk

HEIDUNG FÜ



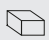
ENTSCHEIDUNG FÜR QUALITÄT

© STUBAI ZMV GmbH

Accessories

No. 7099 Alder-wood handles



Art. No.	Weight	Length		EAN No. 9802793
7099 16	78 g	160 mm	1 Piece	849324
7099 24	160 g	240 mm	1 Piece	849331
7099 30	180 g	300 mm	1 Piece	849348
7099 40	220 g	400 mm	1 Piece	849355

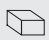
Made of fine-grained alder wood which absorbs perspiration, natural finish. The ergonomically shaped handles have been tested for years and guarantee a safe grip.

Wood type: alder

NOVELTY!

No. 5000 Roll-up bag for woodturning tools 8-pcs.



Art. No.	Weight	Length	Width	Colour		EAN No. 9802793
5000R2	250 g	750 mm	450 mm	red	1 Piece	950945

The rolling bag allows you to safely transport and store up to 8 woodturning tools (**max. 670 mm total length**) without damaging the cutting edge of your irons.

Tip: Put your individual Stubai HSS woodturning iron set together and we will send it to you in the rolling bag.

NOVELTY!

No. 5000 Roll-up bag for woodturning tools 8-pcs.



Art. No.	Weight	Length	Width		EAN No. 9802793
5000R6	250 g	770 mm	710 mm	1 Piece	953380

The rolling bag allows you to safely transport and store up to 3 woodturning tools (**max. 730 mm total length**) without damaging the cutting edge of your irons. Four pockets allow small items to be stored safely.

Tip: Put your individual Stubai HSS woodturning iron set together and we will send it to you in the rolling bag.

NOVELTY!

No. 5000 Roll-up bag for woodturning tools 8-pcs.

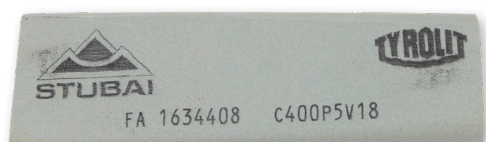


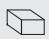
Art. No.	Weight	Length	Width		EAN No. 9802793
5000R3	250 g	550 mm	540 mm	1 Piece	953366

The rolling bag allows you to safely transport and store up to 8 woodturning tools (**max. 490 mm total length**) without damaging the cutting edge of your irons.

Tip: Put your individual Stubai HSS woodturning iron set together and we will send it to you in the rolling bag.

No. 5349 Sharpening stone for woodturning tools



Art. No.	Weight		EAN No. 9802793
5349 20	125 g	1 Piece	865812

Optimal for removing burrs that occur during machine grinding, suitable for all blade shapes due to the special shape. Grain size: coarse.

Use dry, with distilled water or with 5348 01 original "Arkansas" grinding oil. Size variation of +/-10 %.

No. 5380 Sharpening paste



Art. No.	Weight		EAN No.
5380 01	1000 g	1 Piece	506463

Ideal for sharpening carving tools, knives etc., also suitable for polishing oxidation and coarse soiling. Particularly suitable for steel and stainless steel. Medium grit, lasts for approx. 2,000 sharpening cycles.

No. 5370 Sharpening set 2 pcs.



Art. No.	Weight		EAN No.
5370 01	460 g	1 Piece	506456

Soft and hard felt wheel pre-mounted on mandrel, for polishing, sharpening or honing of carving irons, knives, etc., for drilling machines or grinding machines with suitable clamping device

Power range: Each wheel performs up to 4000 sharpening operations.

No. 5370 Felt buffing wheel



Art. No.	Weight	Height	Diameter	Opening		EAN No.
5370 11	150 g	20 mm	125 mm	9 mm	1 Piece	508412

soft - brown: for all hollow cutting shapes

The bore can be changed with commercially available reducing sleeves if necessary.

No. 5370 Felt buffing wheel

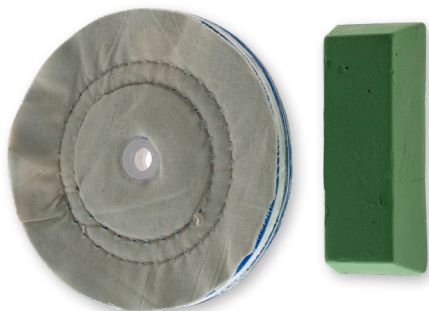


Art. No.	Weight	Height	Diameter	Opening		EAN No.
5370 12	150 g	20 mm	125 mm	9 mm	1 Piece	508429

hard - white: for all straight and curved cutting edges.

The bore can be changed with commercially available reducing sleeves if necessary.

No. 5371 Spare sharpening wheel



Art. No.	Weight	Height	Diameter		EAN No.
5371 01	460 g	12 mm	150 mm	1 Piece	921327

For machine honing and polishing of carving tools.

Operation: Press the paste briefly onto the rotating disk. Lay the blade of the tool flatly on the disk and press on.

Application advantages: Ultra-fast sharpening for maximum edge retention, no annealing, only 1 operation (no burr formation, no honing, no finishing necessary)

Scope of application: Woodcarving tools, plain blades, woodworking chisels, knives, scissors and cutlery (also for HSS)

Cutting angle: For light work in soft wood about 15°, for heavy work in hard wood about 35°.

NOTE:

Cutting edge must not overheat (blue discolouration), otherwise the edge retention will be lost. All possible discoloured parts must be completely ground off before building up new cutting edge.

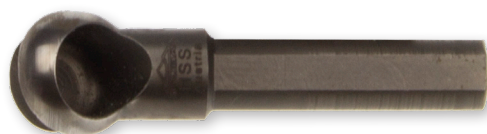
No. 7039 HSS-Cuttinghead



Art. No.	Weight	Width		EAN No.
7039 12	30 g	12 mm	1 Piece	868035
7039 20	45 g	20 mm	1 Piece	868028

For turning out in face wood (longitudinal wood).

No. 7043 HSS cutting head



Art. No.	Weight	Width		EAN No.
7043 14	30 g	14 mm	1 Piece	876269
7043 19	40 g	19 mm	1 Piece	876276

For turning cups, cans, goblets, etc.

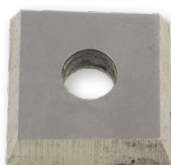
No. 7037 Mould plate, round



Art. No.	Weight		EAN No.
7037 91	30 g	1 Piece	851983

For fine finishing of internal surfaces and curves.

No. 7037 Mould plate, square



Art. No.	Weight		EAN No.
7037 92	40 g	1 Piece	851990

For fine finishing of internal surfaces and curves.

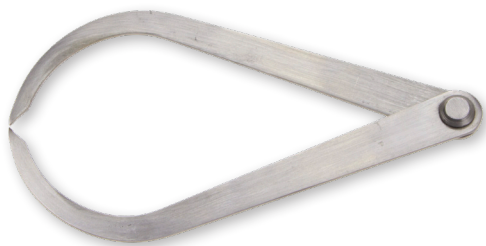
No. 7037 Mould plate, pear shape




Art. No.	Weight		EAN No.
7037 93	40 g	1 Piece	852003

For fine finishing of internal surfaces and curves.

No. 2550 Gripping circle



Art. No.	Weight	Length		EAN No.
2550 02	100 g	180 mm	1 Piece	209364

Made of steel, galvanized.

No. 2520 Pencil circle with bow



Art. No.	Weight	Length	Diameter		EAN No.
2520 02	160 g	200 mm	280 mm	1 Piece	209326

Quenched and tempered steel, tips hardened, polished, joint rivetted, with bow and locking screw, with socket for pencil, pencil included.

No. 2560 Punch circle




Art. No.	Weight	Length		EAN No.
2560 01	80 g	250 mm	1 Piece	209371

Made of steel, galvanized.

No. 3430 Joiner's square, aluminium



Art. No.	Weight	Length	Width		EAN No.
3430 20	220 g	200 mm	150 mm	1 Piece	863597
3430 25	240 g	250 mm	150 mm	1 Piece	863603
3430 30	280 g	300 mm	170 mm	1 Piece	863610
3430 40	350 g	400 mm	200 mm	1 Piece	863627

With double graduation
Steel blade: 40 x 1,2 mm
Aluminium leg: anodized, 40 x 10 mm, precision: +/- 0,057°.

No. 3440 Sliding bevel



Art. No.	Weight	Length		EAN No.
3440 50	200 g	300 mm	1 Piece	307534

Made of beechwood, waterproof glued

Our wide range of presentation options can be perfectly customised to your individual requirements. Whether as a sales wall or narrow individual display - we have the right display for your salesroom. On request, we can customise the display according to your ideas in order to present your customers with the most appealing offer possible. Please contact your sales representative for a quote.



RETENTION OF TITLE

All sales aids (displays, hooks, etc.) are provided free of charge for the duration of the presentation of STUBAI tools, but remain the full property of STUBAI ZMV GmbH.

Hereinafter („General Conditions“) of Stubai ZMV GmbH (hereinafter „Company“) for all legal transactions between the Company and third parties (hereinafter „Contract Partners“) - Status November 1993

I. (1) The Company concludes legal transactions (especially purchases and sales) with the Contract Partners on the exclusive basis of these General Conditions. Differing arrangements, or general or special conditions of a Contract Partner, apply only if they have been separately agreed in writing. (2) If the Contract Partner sends or has sent such conditions without having first made a separate agreement, they renounce all legal effects arising therefrom. (3) If the Contract Partner intends not to accept the Company's General Conditions, they shall in a separate letter make notification thereof, so that negotiations in this regard can be conducted between the Company and its Contract Partner. However, until a written statement has been made to the contrary, these General Conditions of the Company will apply. (4) These General Conditions remain valid as a whole even if any of their individual provisions are found to be legally ineffective. (5) Any General Conditions of the Company which take effect between the Contract Partner and the Company apply to all future contracts concluded between these parties even if specific reference is not made to these conditions. (6) The Company's employees are forbidden from repealing, supplementing or altering these conditions without the Company's authorisation. (7) The Contract Partner shall not transfer his rights and obligations under a contract with the Company to third parties without the Company's written permission. (8) Contract rescissions, supplements and amendments must be in writing to be effective.

II. (1) Offers to the Company can be accepted only by means of a written declaration of acceptance or by actual fulfilment; the bidder is bound to these offers for 4 weeks from the time they are received by the Company. (2) Offers made by the Company are unequivocally non-binding. The Company is entitled to change or revoke its offers at any time, including after receiving a statement of the Contract Partner. Any contract award made by the Contract Partner obliges the Company only if it transmits a written order confirmation to the Contract Partner or actually undertakes fulfilment, regardless of its previous actions. (3) Estimates made by the Company are always non-binding, and serve only to invite the Contract Partner to tender. Their creation is free of charge, unless the Contracting Parties previously agreed otherwise. Services which exceed the usual scope of a cost estimate, such as design work, construction plans, travel, etc., will be invoiced using the Company's normal calculation bases. (4) When the Company creates cost estimates, it is not obligated to consider order-specific circumstances of which it is not made aware. The Contract Partner shall inform the Company of all circumstances which might influence the scope of the work effort and costs. (5) The information about the type, scope, features and prices of the merchandise or services, etc., which is contained in the cost estimates, brochures, circulars, catalogues, ads, illustrations, price lists, etc., is non-binding. (6) Unless otherwise agreed, prices for sales are given in net euros, without VAT, and include packaging in the warehouse A-6166 Fulpmes. They do not include loading, freight, insurance, customs, fees or other ancillary costs. An increase in production costs (wages, materials, administration, energy, altered forming devices, etc.) between the time of contract conclusion and its fulfilment by the Company entitles it to raise the prices accordingly. Orders without a price agreement will be invoiced according to the costs applicable on the day of invoicing, taking the production costs into consideration. (7) Technical changes or deviations from plans and specifications of all types are to be accepted by the Contract Partner, as long as they do not run counter to the purpose he is pursuing.

III. (1) All commercial and technical documents created or handed over by the Company remain the property of the Company. Such documents may not be published, disseminated or otherwise used without the Company's written consent. In particular, such documents may not be made available to third parties. (2) The Company is entitled to demand at any time that all documents be returned, without providing grounds of the Contract Partner.

IV. (1) Unless a separate agreement has been made, it is agreed that the service or delivery will be „ex works (warehouse)“. If the merchandise from the Company is to be delivered to a specific location due to a separate agreement, the delivery to such location will not be deemed „carriage paid“ without an additional agreement. The Company may choose the means of transport at its discretion. It is also entitled to take out insurance for the Contract Partner's invoices without a separate order from the latter. The costs for this are not included in the price and can be settled when the insurance is concluded. (2) All risks are transferred to the Contract Partner at the latest upon fulfilment by the Company. This also applies to partial deliveries regarding the same. For delivery „ex works (warehouse)“, the date of performance is deemed that on which the Company notifies the Contract Partner that the goods are ready to be shipped. Otherwise, the risk is transferred to the Contract Partner (regardless of any agreed delivery clauses, Incoterms, etc.) if the merchandise leaves the Company's factory or warehouse.

V. (1) The delivery date is given as a calendar week within which performance must be provided, and applies „ex works (warehouse)“. It is binding only if expressly designated as such. (2) If the Contract Partner is absent on the delivery date, or in default with the preparations necessary to implement the delivery, they are still deemed to have accepted the performance or delivery. This also applies to partial deliveries. (3) If a service or delivery is delayed because of a circumstance that was not the Company's fault, the period for performance or delivery will be reasonably extended without a separate statement from the Company being necessary, and without the Company being held responsible for any consequences from the delay whatsoever, even if the Company is already in arrears. If this makes filling the order unreasonably difficult, the Company is entitled to withdraw without becoming liable for compensation claims. If the execution of the contract is prevented by force majeure, the Company is exempt from their contractual obligations. In such a case, however, the Company is entitled to provide the performance or service after such prevention has ceased. (4) If the delay is the Company's fault, the Contract Partner is entitled to demand performance or declare their withdrawal from the contract after setting a reasonable grace period of at least six weeks. The Contract Partner shall submit this declaration when the grace period is set – in writing, unconditionally, and definitely. (5) The Company is in any case entitled to make compliance with the deadline for performance or delivery contingent on the receipt of agreed advance payment, prompt payment of other outstanding claims, clarification of open questions that have arisen subsequently, the availability of all necessary instructions, the fulfilment of all technical requirements, and the fulfilment of all other duties – without this incurring any consequences of default. (6) Damage claims based on default in delivery are generally excluded to the extent permitted by law, but for slight negligence in any case. (7) The Contract Partner shall at their cost obtain official authorisations and permits, or third-party confirmations, and make reports to the authorities. (8) Unless otherwise agreed in writing, the Company is entitled to make partial or advance deliveries, and to issue partial invoices accordingly. (9) The recipient of the merchandise must make a written report of any damage or loss on receipt, so that claims can be asserted toward the deliverer (e.g., carrier). Acceptance of the goods or invoice cannot be refused on the grounds of transport damage or shortcomings. (10) The merchandise produced by the Company will be both accepted and taken over after delivery only if expressly agreed. In this case, the Contract Partner shall bear the running costs incurred by both parties, unless otherwise agreed. (11) If the Contract Partner does not accept the contractual goods or services at the right place at the right time, the Company is also entitled to withdraw from the contract after setting a reasonable grace period. The Contract Partner shall be liable for all damages arising therefrom. In the event of imminent danger, the Company can sell the goods in the most optimal manner at the Contract Partner's expense, but without becoming liable to pay the Contract Partner compensation. The Company is also entitled to have the merchandise stored with a third party at the Contract Partner's expense. (12) All goods that are returned by the Contract Partner must be initialised by our field service in advance. A handling fee of 10%, minimum € 25.00, will be charged for all returned merchandise.

VI. (1) Unless otherwise agreed in writing, the payment is due 30 days from the invoice date; if payment is made within 14 days from the invoice date, a 2% discount is permissible as long as all due liabilities have been paid by this date. (2) Payments with cheque or bill of exchange are accepted only pending full discharge of the debt. The Contract Partner shall bear all fees and bank commissions incurred from transfers, or from creating or redeeming bills of exchange or cheques. (3) If a bill is protested or if recourse is taken in its regard, or if an invoice is not paid, all invoices are due immediately without the need to call them in explicitly. The same applies if the Contract Partner's financial circumstances worsen significantly. (4) The delay in payment occurs by itself, without further request being necessary. If there is a default in payment, all of the Contract Partner's claims that have arisen (or might arise) from agreed contractual penalties are forfeited. (5) If there is a default in payment, default interest of 14% p.a. is agreed; any higher interest rate or loss by exchange must be compensated. (6) After the withdrawal from the contract takes effect, the Contract Partner shall immediately and at his expense return to the Company any goods that have already been delivered, pay compensation for any loss of value, and reimburse any expenditures the Company incurred while executing and rescinding the contract. To compensate for the damages accrued in this respect, the Contract Partner shall pay a contractual penalty of 25% of the gross invoiced amount without further verification, due immediately. The contractual penalty does not exclude the assertion of further damage. (7) The Contract Partner may not offset his claims against those of the Company.

VII. (1) Until the invoiced amount has been paid in full, including interest, costs and fees, and until all of the Contract Partner's current and future financial obligations related to the goods delivery (and to all other deliveries and services) have been fully met, the delivered goods will remain the unrestricted property of the Company. The Contract Partner shall at his expense and of his own volition take all actions necessary to establish and maintain the retention of title, depending on the warehouse location. (2) The goods subject to retention of title may be sold or pledged only with the express consent of the Company, and in no case after payments have been stopped. In this case, the Contract Partner shall notify his buyer of the Company's retention of title. Regardless of this, if these goods are resold, the Contract Partner hereby irrevocably offers to assign all receivables incurred thereby to the Company, to its satisfaction and pending full discharge of the debt. The Company can accept this offer of transfer at any time, without temporal restriction. The Contract Partner shall bear all related fees and costs. (3) Furthermore, the Contract Partner is not entitled to handle or process the delivered goods or combine them with other items until all financial obligations have been fulfilled. Otherwise, the Company is entitled to sole ownership to the items resulting from such handling, processing and combining. (4) If the delivered goods are attached or otherwise levied upon, the Contract Partner shall notify the Company thereof immediately and at his expense take all measures to safeguard the Company's right of ownership. If the goods subject to retention of title are not taken out of service by the Company, it may have them stored at the cost and risk of the Contract Partner. The Contract Partner shall reimburse the Company for all expenses arising in connection with the assertion of its property. (5) Taking back the delivered goods is not to be equated with withdrawing from the contract, unless the Company expressly declares this to be the case.

VIII. (1) Unless special agreements have been made, a warranty period of 6 months will apply from the time the risk is transferred. For replacement parts and improvements, the warranty period will amount to 3 months. In any case, warranty claims expire within 6 months of the date on which a timely complaint is made. (2) Notice of visible defects or missing parts using a registered letter must arrive at the Company without delay, but at the latest within 8 days after the beginning of the warranty period – and for hidden defects, within 8 days after their discovery – and any handling must be discontinued immediately, failing which the warranty will be rejected and the goods will be deemed unreservedly and properly accepted without defect. (3) After the Company has received legally effective notification about a defect, it may meet its warranty obligation at its discretion as follows: a. Provide improvement at the Company's premises or another location it designates, after the Contract Partner has sent over the goods; b. Replace the defective goods which have been transferred to the Company's ownership, or c. Replace the defective parts of the goods which have been transferred to the Company's ownership thereby. If the aforementioned measures are not implemented without defect, or at all, despite warnings or setting a reasonable grace period, the Contract Partner is entitled to a price reduction; if agreement on the scope of the price reduction cannot be reached, or if the defect is substantial and irremovable, he is entitled only to the right of conversion. The Company is not affected by any other obligations within the scope of the warranty. (4) The Contract Partner shall bear the costs accumulated in accordance with Para. (3) of this item, except the shipping costs for replacement goods or replacement parts. (5) The Company shall make notification of the deadline for improvement or replacement by at least 5 days in advance. If the Contract Partner is absent on this date for reasons for which he is responsible, or if he makes the improvement or replacement more difficult or impossible, he is deemed to have waived his warranty claims. (6) The Company's warranty is excluded if: the Contract Partner has not complied with the Company's instructions or operating conditions; the defect was caused by the Contract Partner or third parties; these parties handled or repaired the goods themselves, or had them handled or repaired; the Contract Partner has not provided ample opportunity to perform repairs; or as long as the Contract Partner has not fulfilled his obligations – especially regarding payment. Furthermore, the warranty is excluded for consumables and wear parts. Also, the warranty applies only to defects which arise during normal use under compliance with the respective operating conditions. (7) The scope of the warranty does not provide for any claim against the Company for reparation or compensation of any type whatsoever (e.g., follow-up costs, costs for relocation and exchange, loss of prospective profits, freight and access costs, etc.)

IX. (1) In the event of damages, the Company shall be liable for intent or gross negligence. Liability is excluded for slight negligence; so is compensation for consequential damage, pecuniary losses, loss of interest, and damages arising from third-party claims toward the Contract Partner. (2) In the event of gross negligence, the liability for damages is limited to 10 times the net invoice amount for the delivered goods in any case. (3) If any of the Company's conditions for assembly, commissioning and use are not complied with, any damage compensation is excluded. (4) Liability for damages according to the Product Liability Act and other comparable standards is excluded, regardless of the legal system from which they originate, unless this would contradict mandatory legal provisions. The Contract Partner shall oblige all his buyers to comply with this disclaimer benefiting the Company and to pass this duty on down to the last user, and shall prepare documentation verifying that this has been done. Within the internal relationship, the Contract Partner shall bear all third-party claims based on product liability; in particular, the Contract Partner shall immediately indemnify and hold harmless the Company if claims are made against him. The Company assumes no liability for products or product information put into circulation by the Contract Partner. (5) In the course of marketing the Company's products, the Contract Partner shall ensure that the procedure for transmission can be demonstrably established, especially regarding names and addresses of purchasers, the type of product, and the sales date. The Contract Partner shall also make his employees aware, on an ongoing and verifiable basis, about all information and instructions which the Company delivers with its products (e.g., regarding statutory provisions and state mandates). This also applies to the Contract Partner's buyers; the Contract Partner shall therefore thoroughly inform and advise his buyers accordingly, through appropriate instructions given to his sales personnel. The Contract Partner shall notify the Company if he becomes aware of any defects in the Company's products or product information, shall monitor to ensure that all product information, laying and setting work, possible applications, etc., regarding the Company's products conform with the current state of science and technology, and if there are any discrepancies shall inform the Company immediately and keep the products from being marketed. (6) The Contract Partner shall keep all documents, deeds and verifications for at least 10 years from the time they are brought onto the market or passed on, and return them in their entirety on request.

X. (1) The place of performance for all deliveries and payments is A-6166 Fulpmes, even if the transfer actually takes place somewhere else. (2) For all contracts concluded between the Company and its Contract Partner, and all claims arising from the legally effective existence or non-existence of these contracts, it is agreed that substantive Austrian law will apply. The Company remains free to expressly renounce the application of Austrian law in writing. In the case of such renunciation, the law is deemed agreed, at the Company's discretion, that either is applicable in the country in which the Contract Partner has his registered office, or that, due to the regulations of international private law, is applicable in the country in which judicial litigation over the disputed claim is being or will be conducted. (3) For all legal disputes arising from a contract, the court having jurisdiction *ratione materiae* for A-6166 Fulpmes is agreed as the exclusive place of jurisdiction. However, the Company can also sue the Contract Partner in another domestic or foreign place of jurisdiction. (4) Within the course of EDP, all data and data of the Contract Partner relevant to the business relationship will be stored, taking into account the Data Protection Act. All packages delivered to you are completely released from obligation via the ARA licensee number 2616.

Mistakes, typesetting and printing errors, and possible production-based deviations in colour and weight excepted.

Tools from professionals for professionals.

● PLIER TOOLS

● SCREWDRIVING TOOLS

● CONSTRUCTION TOOLS

● WOODWORKING TOOLS

● WOODTURNING TOOLS

● WOODCARVING TOOLS

● ROOFING TOOLS

● FORESTRY TOOLS

● CUTLERY PRODUCTS

● WORK SAFETY

● MOUNTAINEERING

● SALES AIDS

STUBAI ZMV GmbH
Zentrale für Marketing & Vertrieb
Dr. Kofler Straße 1
Postfach 35/50
6166 Fulpmes, Austria

Phone: +43 5225 6960-0
Fax: +43 5225 6960-13
E-Mail: office@stubai.com

www.stubai.com

